

The La Trobe University Student Union (LTSU) is the peak representative body for La Trobe students at the Melbourne and Bundoora campuses.

Our purpose is to advance the education of students by:

**ENHANCING**

the learning experience of students while at the University.

**SUPPORTING**

and co-ordinating the activities of students.

**PROMOTING**

the interests and welfare of students.

**REPRESENTING**

students within and outside the University.

**PROVIDING**

amenities and services for students, other members of the University community and the public.



Find out more on the LTSU website



KNOW YOUR HOUSING RIGHTS

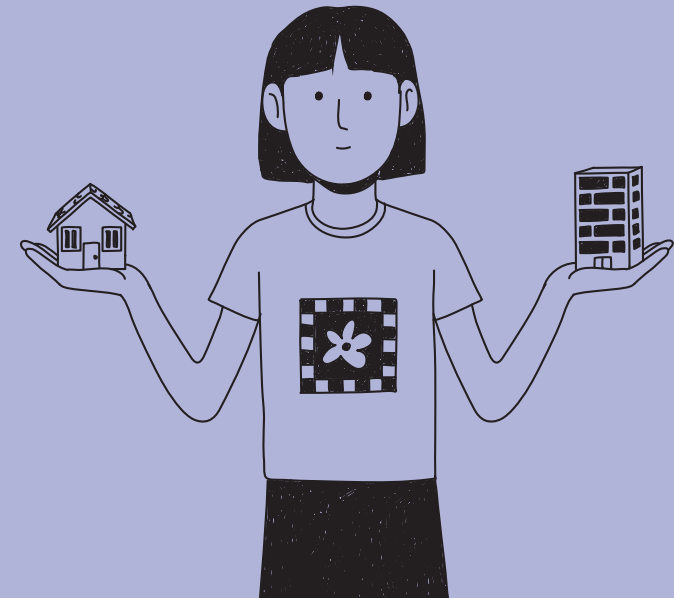
[latrobesu.org.au/advocacy](http://latrobesu.org.au/advocacy)  
[ltsu.advocacy@latrobe.edu.au](mailto:ltsu.advocacy@latrobe.edu.au)  
(03) 9479 2469



KNOW YOUR HOUSING RIGHTS

# KNOW YOUR HOUSING RIGHTS

A quick guide to the do's and don'ts of uni residence.



# RENTAL MINIMUM STANDARDS



In Victoria, unlike a private rental living, you are not covered by the Rental Tenancies Act on residence, which reduces the legal protections in place.

You also usually need to be a student to qualify for on residence accommodation. If you get excluded from the university for misconduct, you can find yourself being evicted from your accommodation as well. Make sure you read the Conditions and Rules of Residence booklet that the university will provide you to understand the rules for living on residence.

For minor misconduct, there will be a disciplinary hearing. For serious misconduct, you can be excluded from the university with only 48 hours' notice.

If you have any questions or need support, the La Trobe Student Union advocacy team are here to help. You can contact the team if you need advice on an issue at university or if you need someone to advocate on your behalf.



Scan to contact us for advocacy and support at [latrobesu.org.au/advocacy](http://latrobesu.org.au/advocacy)

## DO'S

Go to events to meet people and find out what support is available.

Keep noise down in quiet periods.

Get ambulance cover. It's only \$49.94 a year — a call out fee can cost thousands!

Clean up after yourself (that includes dishes!)

Evacuate when the alarm goes off. It might be a false alarm, but better safe than sorry!

Speak up if you feel unsafe or if there's anything that needs to be fixed. Make sure you put it in writing.

## DON'TS

Mess with the fire equipment like smoke alarms, smoke detectors or fire extinguishers. While these can be sensitive and set off easily, you can be kicked out of the residence if you tamper with this equipment!

Smoke or vape in or around the residential buildings (unless in the designated smoking areas).

Eat or throw out other people's food.

Let people into the accommodation services after 10pm. You're sharing the space and need to let other people sleep.

Participate in drinking games, hazing, bullying, sexual harassment, assault, theft and violence.